

Relax... You're at The Village.



www.villageatstevensville.com
sales@villageatstevensville.com
Stevensville, MI 49127 • 269-208-5302



Welcome home to *The Village at Stevensville*. Nestled on a wooded bluff above the Village of Stevensville, this twenty-nine unit condominium development is comprised of affordable single-family homes offering the convenience of carefree living. Condominium living frees you from many of the responsibilities that often accompany property ownership, such as lawn maintenance and snow removal.

Homes are set on individual lots, and come with optional floor plans offering 2 or 3 bedrooms. All homes include a roomy 2-car attached garage. Most include a walkout lower-level and a private wooded backyard. Numerous exterior options and upgrades are available promising that the Village will be an interesting community of tasteful colors and finishes.

The Village at Stevensville contains quality-crafted homes in keeping with the Fiskars motto: *Top Quality, On Time, Under Budget, No Excuses*. Framing and structure exceeds all local building codes, have copper pipes, high efficiency gas furnaces, 200/amp electrical service and concrete basement walls. Finishes include a variety of floor coverings, wood cabinets, and insulated residential doors and windows.

The homes in The Village at Stevensville are a sound investment for the first time home buyer or empty-nester looking for an opportunity to live in a brand new single-family home while building home ownership equity for a monthly payment less than rent.

FISKARS PROPERTIES

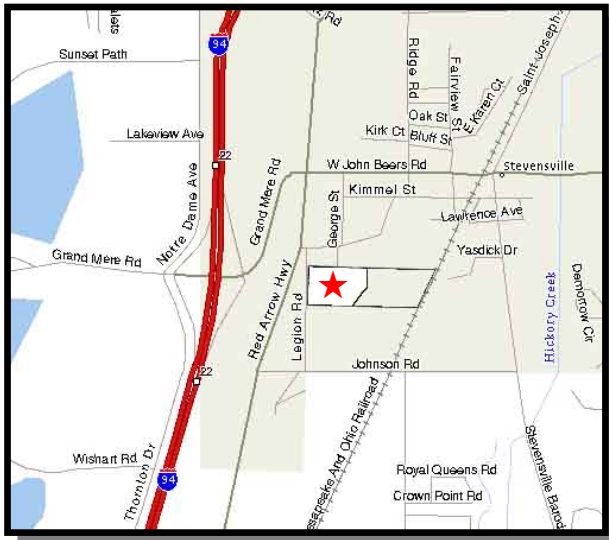
SAINT JOSEPH • MI • 49085
269.428.7400 • FAX 269.428.0932
MOBILE 269.208.5302

INTRODUCTION

APRIL 20, 2012 PAGE 1

The Village

At Stevensville



VICINITY MAP



FISKARS PROPERTIES

SAINT JOSEPH • MI • 49085
 269.428.7400 • FAX 269.428.0932
 MOBILE 269.208.5302

SITE PLAN

APRIL 20, 2012 PAGE 2



<u>Units</u>	<u>Name</u>	<u>Sq. Ft</u>	<u>Description</u>
3001 SOLD	Franklin	1400	(2) Bedroom, (2) Bath, (2) Car, Walkout
3004 SOLD	Harrison	1320	(3) Bedroom, (2) Bath, (2) Car, Lookout
3005 SOLD	Franklin	1600	(2) Bedroom, (2) Bath, (2) Car, Walkout
3009 SOLD	Franklin	1400	(2) Bedroom, (2) Bath, (2) Car, Walkout
3013 SOLD	Franklin	1400	(2) Bedroom, (2) Bath, (2) Car, Walkout
3014	Franklin	1600	(2) Bedroom, (2) Bath, (2) Car, Walkout
3094 SOLD	Harrison	1320	(3) Bedroom, (2) Bath, (2) Car, Lookout
<u>Phase 2</u>			
3017 SOLD	Franklin	1400	(2) Bedroom, (2) Bath, (2) Car, Walkout
3018 SOLD	Franklin	1600	(2) Bedroom, (2) Bath, (2) Car, Lookout
3021 SOLD	Franklin	1400	(2) Bedroom, (2) Bath, (2) Car, Walkout
3022 SOLD	Franklin	1600	(2) Bedroom, (2) Bath, (2) Car, Lookout
3026 SOLD	Franklin	1600	(2) Bedroom, (2) Bath, (2) Car, Lookout
<u>Phase 3</u>			
3025	Franklin	1400	(2) Bedroom, (2) Bath, (2) Car, Lookout
3029	Franklin	1400	(2) Bedroom, (2) Bath, (2) Car, Lookout
3033	Harrison	1320	(3) Bedroom, (2) Bath, (2) Car, Lookout
3037	Franklin	1400	(2) Bedroom, (2) Bath, (2) Car, Walkout
3041	Franklin	1400	(2) Bedroom, (2) Bath, (2) Car, Walkout
3045	Franklin	1400	(2) Bedroom, (2) Bath, (2) Car, Walkout
3049	Franklin	1400	(2) Bedroom, (2) Bath, (2) Car, Walkout
<u>Phase 4</u>			
3053	Franklin	1400	(2) Bedroom, (2) Bath, (2) Car, Walkout
3057	Franklin	1400	(2) Bedroom, (2) Bath, (2) Car, Walkout
3061	Franklin	1400 or 1600	(2) Bedroom, (2) Bath, (2) Car, Walkout
3065	Franklin	1400 or 1600	(2) Bedroom, (2) Bath, (2) Car, Walkout
3069	Franklin	1400 or 1600	(2) Bedroom, (2) Bath, (2) Car, Walkout
<u>Phase 5</u>			
3073	Franklin	1400 or 1600	(2) Bedroom, (2) Bath, (2) Car, Walkout
3077	Franklin	1400	(2) Bedroom, (2) Bath, (2) Car, Walkout
3081	Franklin	1400	(2) Bedroom, (2) Bath, (2) Car, Lookout
3085	Franklin	1400	(2) Bedroom, (2) Bath, (2) Car, Lookout
3089	Franklin	1400	(2) Bedroom, (2) Bath, (2) Car, Lookout

FISKARS PROPERTIES

SAINT JOSEPH • MI • 49085

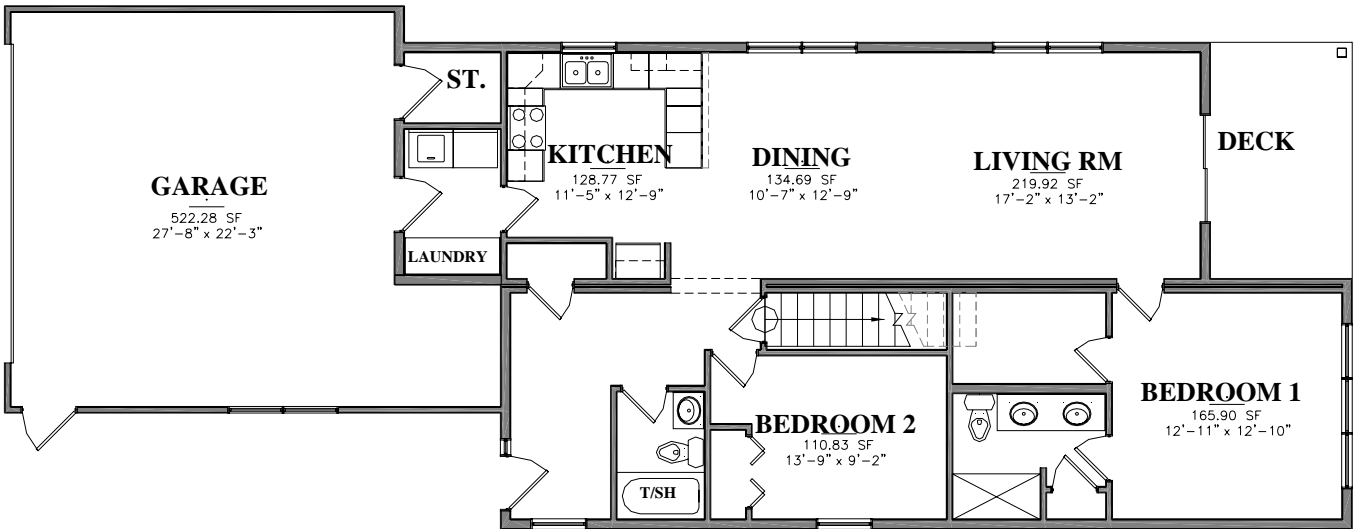
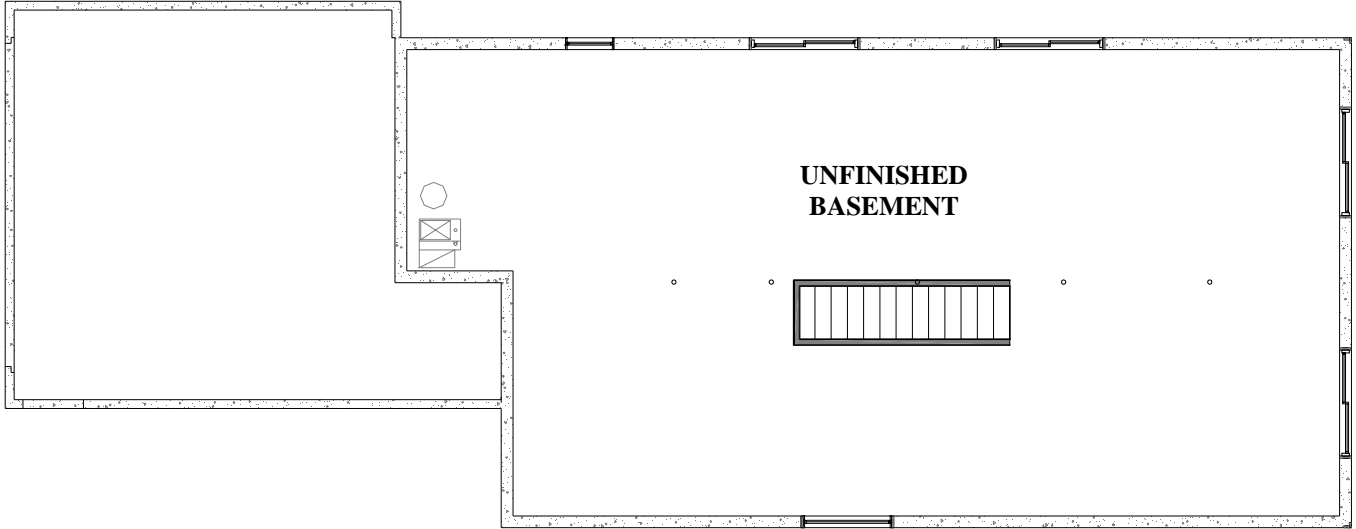
269.428.7400 • FAX 269.428.0932

MOBILE 269.208.5302

SITE PLAN DESCRIPTION

The Village

At Stevensville

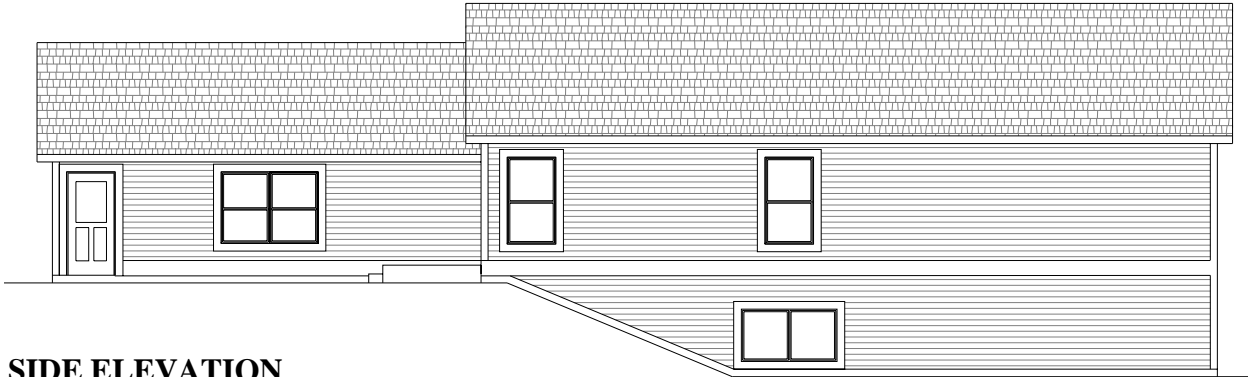


FISKARS PROPERTIES

SAINT JOSEPH • MI • 49085
 269.428.7400 • FAX 269.428.0932
 MOBILE 269.208.5302

FRANKLIN 1400 FLOOR PLANS

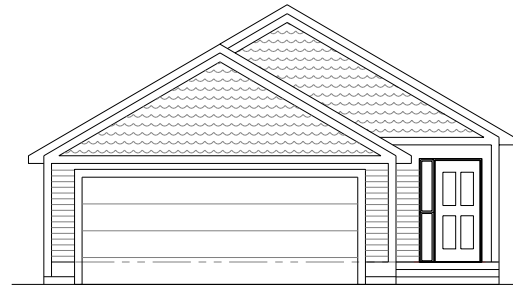
The
Village
At Stevensville



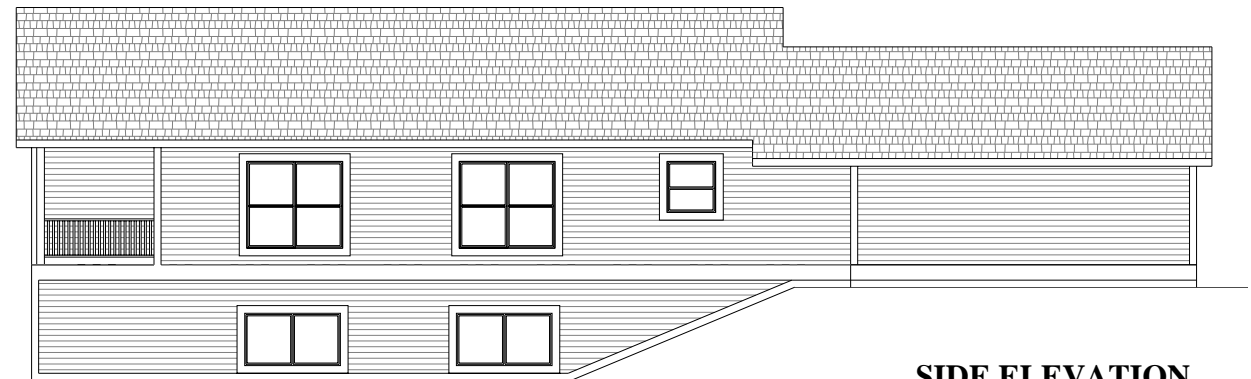
SIDE ELEVATION



BACK ELEVATION



FRONT ELEVATION



SIDE ELEVATION

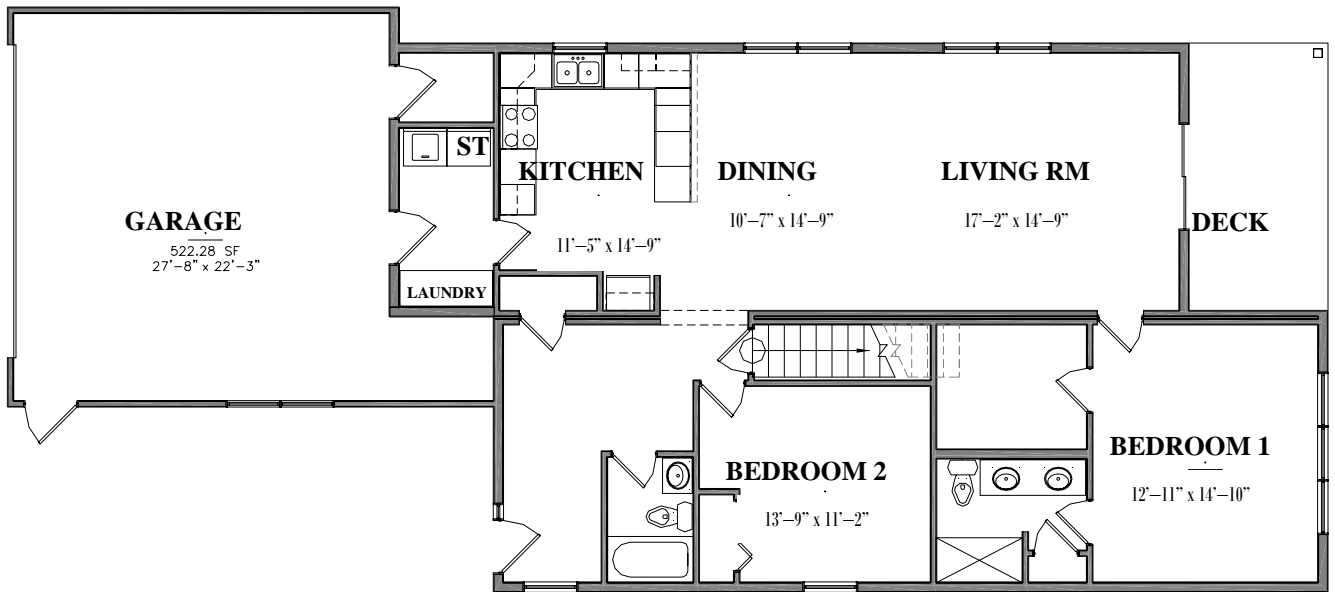
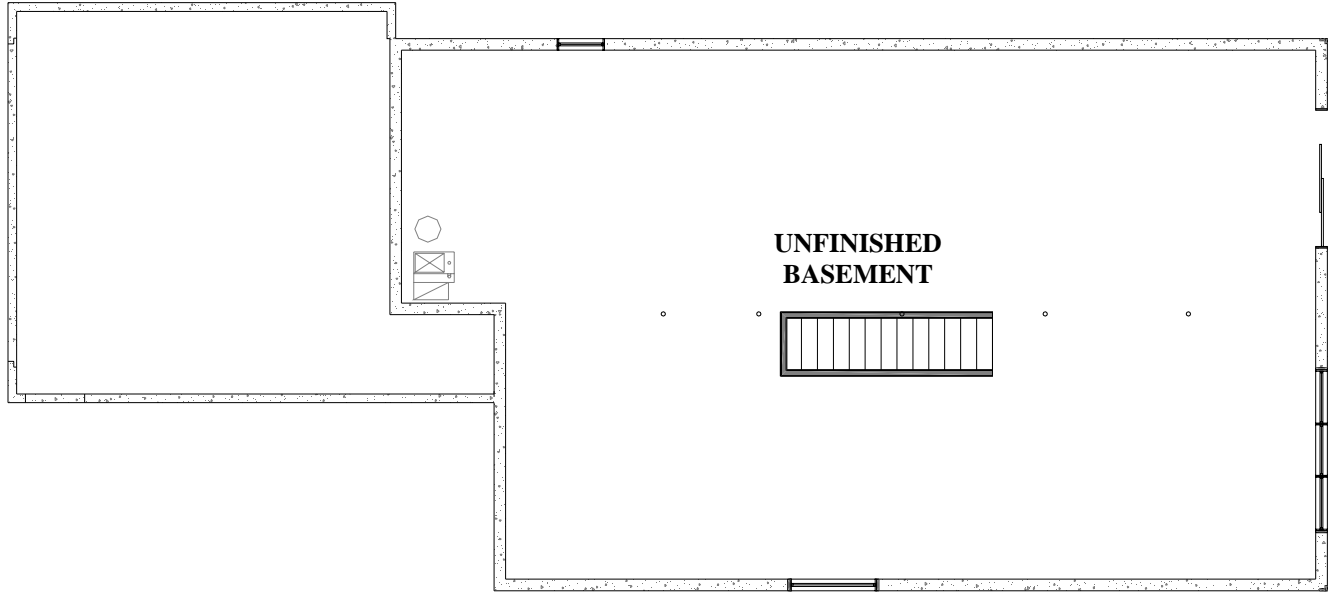
FISKARS PROPERTIES

SAINT JOSEPH • MI • 49085
269.428.7400 • FAX 269.428.0932
MOBILE 269.208.5302

FRANKLIN 1400 ELEVATIONS

APRIL 20, 2012 PAGE 5

The
Village
 At Stevensville

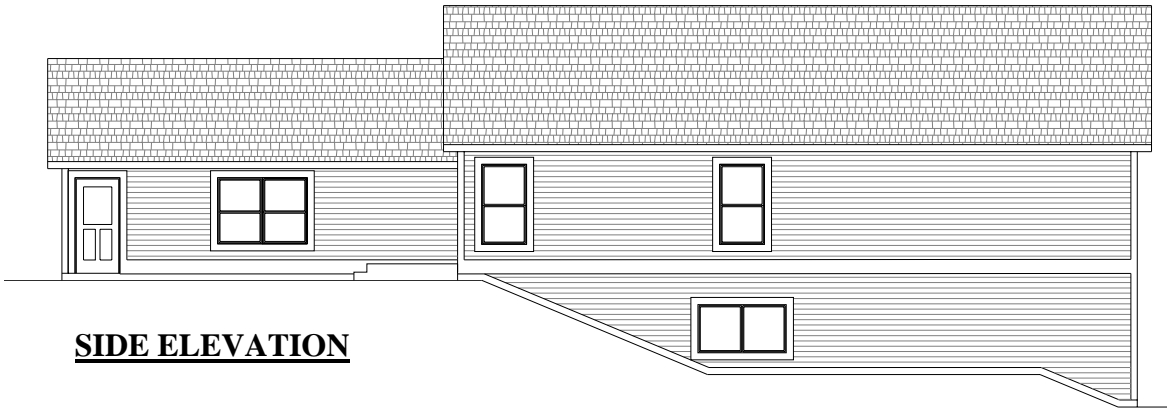


FISKARS PROPERTIES

SAINT JOSEPH • MI • 49085
 269.428.7400 • FAX 269.428.0932
 MOBILE 269.208.5302

FRANKLIN 1600 FLOOR PLANS

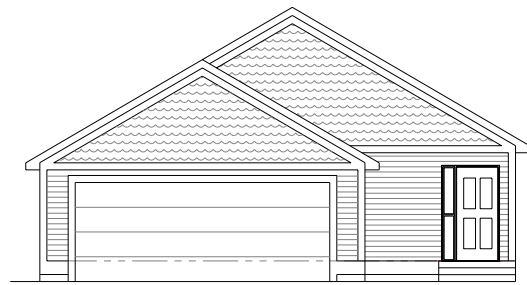
The
Village
At Stevensville



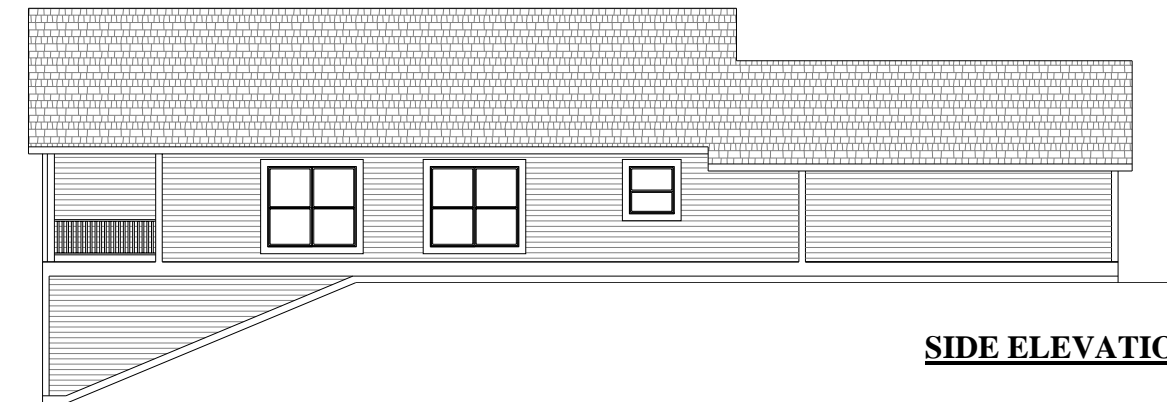
SIDE ELEVATION



BACK ELEVATION



FRONT ELEVATION



SIDE ELEVATION

FISKARS PROPERTIES

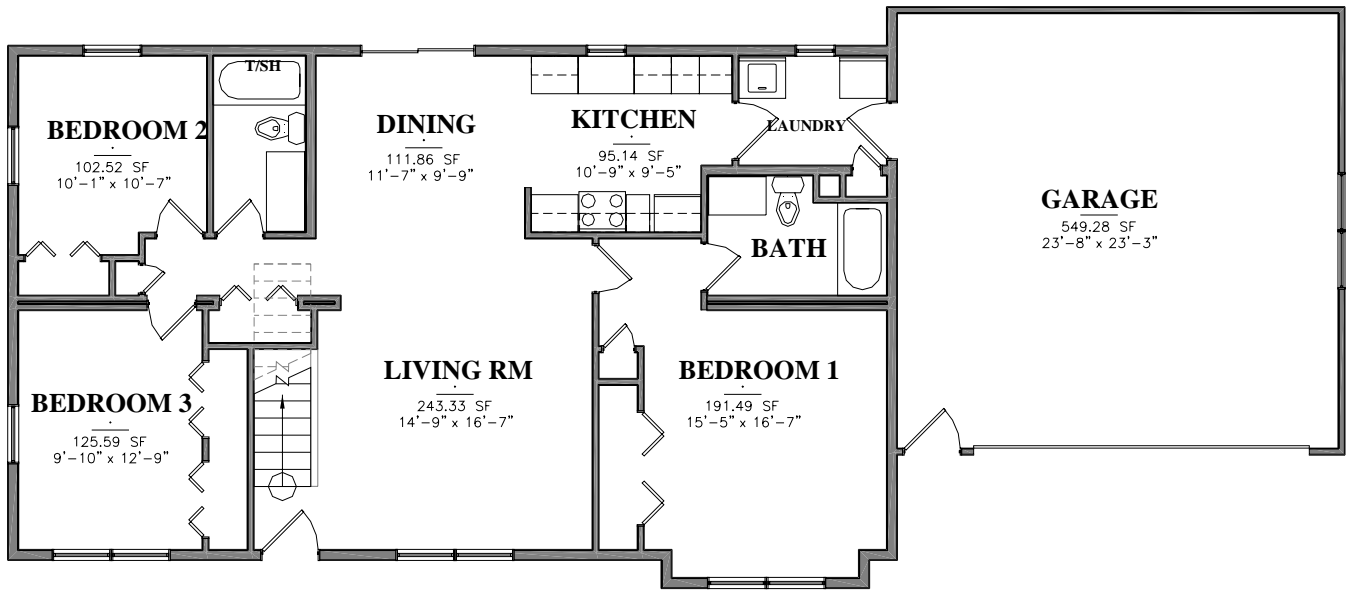
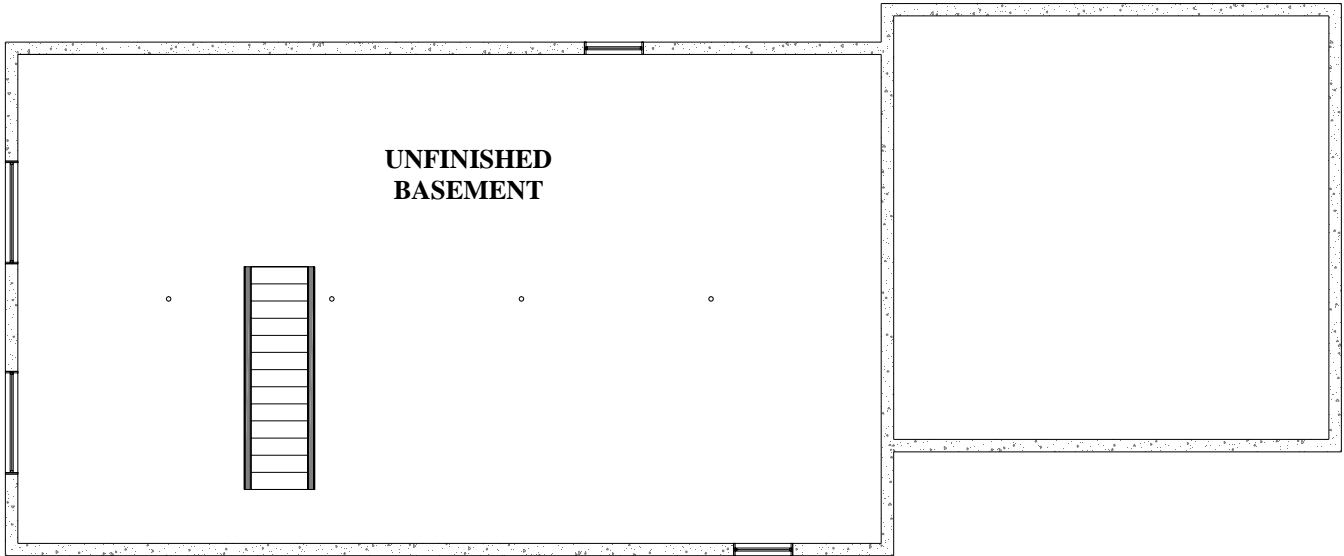
SAINT JOSEPH • MI • 49085
269.428.7400 • FAX 269.428.0932
MOBILE 269.208.5302

FRANKLIN 1600 ELEVATIONS

APRIL 20, 2012 PAGE 7

The Village

At Stevensville



FISKARS PROPERTIES

SAINT JOSEPH • MI • 49085
269.428.7400 • FAX 269.428.0932
MOBILE 269.208.5302

HARRISON 1320 FLOOR PLANS

APRIL 20, 2012 PAGE 8

The
Village
At Stevensville



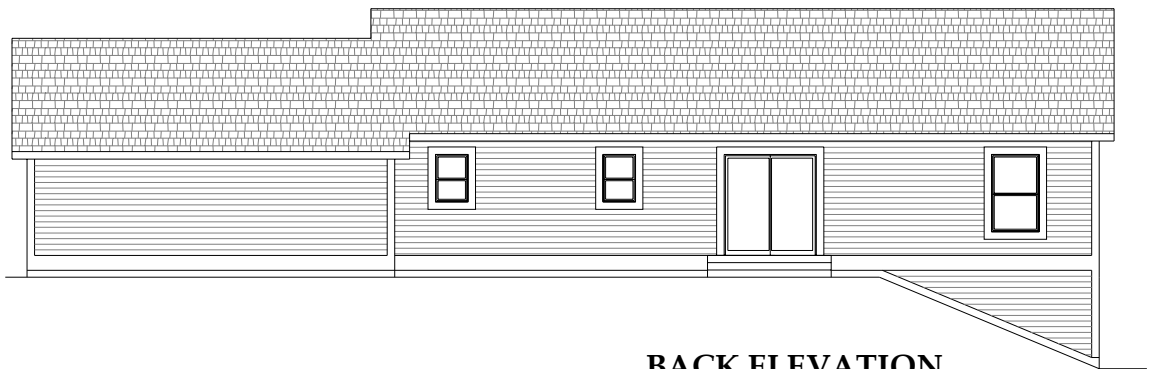
SIDE ELEVATION



SIDE ELEVATION



FRONT ELEVATION



BACK ELEVATION

FISKARS PROPERTIES

SAINT JOSEPH • MI • 49085
269.428.7400 • FAX 269.428.0932
MOBILE 269.208.5302

HARRISON 1320 ELEVATIONS

APRIL 20, 2012 PAGE 9

An Energy Star Home

Interior Features

Appliances Included

- ◆ Range Hood
- ◆ Garbage disposal - ½ HP
- ◆ 40 gallon, high efficiency water heater.

Telephone, Television, (Media)

- ◆ 9- Pass & Seymour media Outlets per plan

Heating and Cooling

- ◆ High Efficiency gas furnace
- ◆ Central air conditioning in each unit

Floor Coverings

- ◆ Living room, dining rooms, and Bedrooms — Carpet.
- ◆ Kitchen, baths, and utility room - Vinyl composite tile.

Interior Door and Trim

- ◆ 1-3/8" Hollow core six-panel molded high density fiberboard painted interior doors with 2-1/4" colonial casing.
- ◆ 3-1/2" colonial base

Kitchen & Bath Cabinets & Countertops

- ◆ Seneca Oak Ridge Arch Cabinets - finish selection chosen by buyer
- ◆ Plastic laminate countertop in kitchen
- ◆ Cultured marble sink/counter in baths

Utility/Laundry Room

- ◆ Painted wood shelving

Hardware

- ◆ Latch and locksets – Choice of Polished Brass, or Chrome finish.



Bathroom Cabinets and Mirrors

- ◆ Base cabinet with cultured marble countertop/lavatory.
- ◆ Mirrors provided in Main Bath and Master Bath over vanity

Decorating

- ◆ Wall and ceiling primed and painted, finish coat flat "Dover White"
- ◆ Window, door and trim casing painted semi-gloss "Dover White"

Garage Door Operators

- ◆ Electric door operators included

Exterior Features

Grounds

- ◆ Professionally landscaped grounds.
- ◆ Guest parking in your private driveway.
- ◆ Private, attached 2-car garage with electric keypad for all units.

Exterior

- ◆ Shingles - N.H. Weathered Wood (25 year rated)
- ◆ Siding – Vinyl, Color: Clay
- ◆ Soffit/Facia – Aluminum, Color: White

Entry Doors

- ◆ Insulated steel – Exterior lock sets

FISKARS PROPERTIES

SAINT JOSEPH • MI • 49085

269.428.7400 • FAX 269.428.0932

MOBILE 269.208.5302

FEATURES

APRIL 20, 2012 PAGE 10